

Children, Young People and Family Support Scrutiny and Policy Development Committee

Wednesday 9 March 2022 at 1.00 pm

To be held at the Town Hall, Pinstone Street, Sheffield, S1 2HH

The Press and Public are Welcome to Attend

Membership

Councillors Mick Rooney (Chair), Maroof Raouf (Deputy Chair), Mike Chaplin, Anne Murphy, Vickie Priestley, Kaltum Rivers, Safiya Saeed, Jack Scott, Richard Shaw, Sophie Wilson, Ann Whitaker, Cliff Woodcraft and Ann Woolhouse

Education Non-Council Members

Alison Warner, Sam Evans, Peter Naldrett, Vacancy and Vacancy

Healthwatch Sheffield

Alice Riddell (Observer)

Substitute Members

In accordance with the Constitution, Substitute Members may be provided for the above Committee Members as and when required.

PUBLIC ACCESS TO THE MEETING

The Children, Young People and Family Support Scrutiny Committee exercises an overview and scrutiny function in respect of the planning, policy development and monitoring of service performance and other general issues relating to learning and attainment and the care of children and young people within the Children's Services area of Council activity. It also scrutinises as appropriate the various local Health Services functions, with particular reference to those relating to the care of children.

A copy of the agenda and reports is available on the Council's website at www.sheffield.gov.uk. You can also see the reports to be discussed at the meeting if you call at the First Point Reception, Town Hall, Pinstone Street entrance. The Reception is open between 9.00 am and 5.00 pm, Monday to Thursday and between 9.00 am and 4.45 pm. You may not be allowed to see some reports because they contain confidential information. These items are usually marked * on the agenda.

Members of the public have the right to ask questions or submit petitions to Scrutiny Committee meetings and recording is allowed under the direction of the Chair. Please see the website or contact Democratic Services for further information regarding public questions and petitions and details of the Council's protocol on audio/visual recording and photography at council meetings.

Scrutiny Committee meetings are normally open to the public but sometimes the Committee may have to discuss an item in private. If this happens, you will be asked to leave. Any private items are normally left until last. If you would like to attend the meeting please report to the First Point Reception desk where you will be directed to the meeting room.

If you require any further information about this Scrutiny Committee, please contact Alice Nicholson, Policy and Improvement Officer on 0114 27 35065 or [email alice.nicholson@sheffield.gov.uk](mailto:alice.nicholson@sheffield.gov.uk)

FACILITIES

There are public toilets available, with wheelchair access, on the ground floor of the Town Hall. Induction loop facilities are available in meeting rooms.

Access for people with mobility difficulties can be obtained through the ramp on the side to the main Town Hall entrance.

**CHILDREN, YOUNG PEOPLE AND FAMILY SUPPORT SCRUTINY AND POLICY
DEVELOPMENT COMMITTEE AGENDA
9 MARCH 2022**

Order of Business

- 1. Welcome and Housekeeping Arrangements**
- 2. Apologies for Absence**
- 3. Exclusion of Public and Press**
To identify items where resolutions may be moved to exclude the press and public
- 4. Declarations of Interest** (Pages 5 - 8)
Members to declare any interests they have in the business to be considered at the meeting
- 5. Minutes of Previous Meeting** (Pages 9 - 16)
To approve the minutes of the meetings of Committee held on 9th February, 2022
- 6. Public Questions and Petitions**
To receive any questions or petitions from members of the public
- 7. Early Help Review** (Pages 17 - 24)
Report of the Director of Children and Families
- 8. Update on Special Educational Needs and Disability Services (SEND)**
The Director of Education and Skills to report
- 9. Children, Young People and Family Support Scrutiny and Policy Development Committee - Closing Report - March 2022** (Pages 25 - 28)
Report of the Policy and Improvement Officer

This page is intentionally left blank

ADVICE TO MEMBERS ON DECLARING INTERESTS AT MEETINGS

If you are present at a meeting of the Council, of its executive or any committee of the executive, or of any committee, sub-committee, joint committee, or joint sub-committee of the authority, and you have a **Disclosable Pecuniary Interest (DPI)** relating to any business that will be considered at the meeting, you must not:

- participate in any discussion of the business at the meeting, or if you become aware of your Disclosable Pecuniary Interest during the meeting, participate further in any discussion of the business, or
- participate in any vote or further vote taken on the matter at the meeting.

These prohibitions apply to any form of participation, including speaking as a member of the public.

You **must**:

- leave the room (in accordance with the Members' Code of Conduct)
- make a verbal declaration of the existence and nature of any DPI at any meeting at which you are present at which an item of business which affects or relates to the subject matter of that interest is under consideration, at or before the consideration of the item of business or as soon as the interest becomes apparent.
- declare it to the meeting and notify the Council's Monitoring Officer within 28 days, if the DPI is not already registered.

If you have any of the following pecuniary interests, they are your **disclosable pecuniary interests** under the new national rules. You have a pecuniary interest if you, or your spouse or civil partner, have a pecuniary interest.

- Any employment, office, trade, profession or vocation carried on for profit or gain, which you, or your spouse or civil partner undertakes.
- Any payment or provision of any other financial benefit (other than from your council or authority) made or provided within the relevant period* in respect of any expenses incurred by you in carrying out duties as a member, or towards your election expenses. This includes any payment or financial benefit from a trade union within the meaning of the Trade Union and Labour Relations (Consolidation) Act 1992.

*The relevant period is the 12 months ending on the day when you tell the Monitoring Officer about your disclosable pecuniary interests.

- Any contract which is made between you, or your spouse or your civil partner (or a body in which you, or your spouse or your civil partner, has a beneficial interest) and your council or authority –
 - under which goods or services are to be provided or works are to be executed; and
 - which has not been fully discharged.

- Any beneficial interest in land which you, or your spouse or your civil partner, have and which is within the area of your council or authority.
- Any licence (alone or jointly with others) which you, or your spouse or your civil partner, holds to occupy land in the area of your council or authority for a month or longer.
- Any tenancy where (to your knowledge) –
 - the landlord is your council or authority; and
 - the tenant is a body in which you, or your spouse or your civil partner, has a beneficial interest.
- Any beneficial interest which you, or your spouse or your civil partner has in securities of a body where -
 - (a) that body (to your knowledge) has a place of business or land in the area of your council or authority; and
 - (b) either -
 - the total nominal value of the securities exceeds £25,000 or one hundredth of the total issued share capital of that body; or
 - if the share capital of that body is of more than one class, the total nominal value of the shares of any one class in which you, or your spouse or your civil partner, has a beneficial interest exceeds one hundredth of the total issued share capital of that class.

If you attend a meeting at which any item of business is to be considered and you are aware that you have a **personal interest** in the matter which does not amount to a DPI, you must make verbal declaration of the existence and nature of that interest at or before the consideration of the item of business or as soon as the interest becomes apparent. You should leave the room if your continued presence is incompatible with the 7 Principles of Public Life (selflessness; integrity; objectivity; accountability; openness; honesty; and leadership).

You have a personal interest where –

- a decision in relation to that business might reasonably be regarded as affecting the well-being or financial standing (including interests in land and easements over land) of you or a member of your family or a person or an organisation with whom you have a close association to a greater extent than it would affect the majority of the Council Tax payers, ratepayers or inhabitants of the ward or electoral area for which you have been elected or otherwise of the Authority's administrative area, or
- it relates to or is likely to affect any of the interests that are defined as DPIs but are in respect of a member of your family (other than a partner) or a person with whom you have a close association.

Guidance on declarations of interest, incorporating regulations published by the Government in relation to Disclosable Pecuniary Interests, has been circulated to you previously.

You should identify any potential interest you may have relating to business to be considered at the meeting. This will help you and anyone that you ask for advice to fully consider all the circumstances before deciding what action you should take.

In certain circumstances the Council may grant a **dispensation** to permit a Member to take part in the business of the Authority even if the member has a Disclosable Pecuniary Interest relating to that business.

To obtain a dispensation, you must write to the Monitoring Officer at least 48 hours before the meeting in question, explaining why a dispensation is sought and desirable, and specifying the period of time for which it is sought. The Monitoring Officer may consult with the Independent Person or the Council's Audit and Standards Committee in relation to a request for dispensation.

Further advice can be obtained from Gillian Duckworth, Director of Legal and Governance on 0114 2734018 or email gillian.duckworth@sheffield.gov.uk.

This page is intentionally left blank

Children, Young People and Family Support Scrutiny and Policy Development
Committee

Meeting held 9 February 2022

PRESENT: Councillors Mick Rooney (Chair), Maroof Raouf (Deputy Chair),
Mike Chaplin, Safiya Saeed, Richard Shaw, Sophie Wilson,
Ann Whitaker and Cliff Woodcraft

Non-Council Members in attendance:-

Sam Evans, (Diocese Representative - Non-Council Voting Member)
Alice Riddell, (Healthwatch Sheffield, Observer)

.....

1. APOLOGIES FOR ABSENCE

1.1 Apologies for absence were received from Councillors Anne Murphy, Kaltum Rivers and Ann Woolhouse.

2. EXCLUSION OF PUBLIC AND PRESS

2.1 No items were identified where resolutions may be moved to exclude the public and press.

3. DECLARATIONS OF INTEREST

3.1 In relation to item 8 on the agenda (Sheffield Sexual Exploitation Service (Amber Project) - Annual Report 2020-21), Councillor Safiya Saeed declared a personal interest as a trustee of Voluntary Action Sheffield.

4. MINUTES OF PREVIOUS MEETING

4.1 The minutes of the meeting of the Committee held on 24th November, 2021, were approved as a correct record and, arising therefrom, the Policy and Improvement Officer (Alice Nicholson) reported that (a) Early Help Services would be considered at the Committee's next meeting, on 9th March 2022 and (b) whilst officers in the Children and Families Service had met with a number of adopters to discuss their concerns regarding the One Adoption Regional Adoption Agency, the meeting, comprising Members and relevant officers, to enable the adopters to raise their concerns/issues privately, as suggested by the Chair, had not yet been held, but arrangements would be made for this meeting to be held at the earliest possible opportunity.

5. PUBLIC QUESTIONS AND PETITIONS

5.1 No questions were raised or petitions submitted by members of the public.

6. SHEFFIELD CHILDREN SAFEGUARDING PARTNERSHIP - ANNUAL REPORT 2020-21

6.1 The Committee received the Sheffield Children Safeguarding Partnership - Annual Report 2020-21.

6.2 In attendance for this item were Carly Speechley (Director of Children and Families), Shelley Hemsley (District Commander, South Yorkshire Police), Tina Gilbert (Sheffield Children Safeguarding Partnership (SCSP) Safeguarding Partnership Manager) and Donna Taylor (Assistant Director, Safeguarding and Quality Assurance).

6.3 Shelley Hemsley introduced the report, which contained details of the achievements of the Partnership during 2020-21 with regard to the safeguarding of children and young people in Sheffield. The report also contained information on impact, the views of children and young people and families, how the Partnership priorities were supported and what it hoped to achieve in 2021-22. The report also set out details of Partnership activity, including Hidden Harm, Licensing Workforce Development, Audit and Performance and Child Safeguarding Practice Reviews.

6.4 Ms Hemsley stated that she would like to place on record her thanks and appreciation to David Ashcroft, the retiring Independent Chair of the Partnership, for the excellent support and leadership he had shown in the role during the last three years. She added that recruitment for a new Independent Chair had been completed, and the new Chair would hopefully be commencing in their role in April 2022.

6.5 Members of the Committee raised questions, and the following responses were provided:-

- One of the three main priorities for the SCSP was neglect, specifically the approach to assessing the needs of those children and young people potentially suffering from neglect and particularly, the cumulative impact of neglect. Training on the use of a new assessment tool developed by the NSPCC would start for relevant professionals across the Partnership in April 2022. The second priority was contextual safeguarding, where again, staff were looking at identifying early signs of risks facing children and young people, mainly regarding them going missing, being exploited, either criminally or sexually, or displaying sexual harmful behaviour or signs of violence. The third priority focused on the need to identify support for children and young people and families at an early stage in relation to emotional wellbeing and mental health in order to stop problems escalating. The Council also had a role, as corporate parents, in terms of looked after children in the city, of which there were currently around 680. The Council needed to look at the best outcomes for such children, in terms of education, health and becoming

successful adults.

- The COVID-19 pandemic had caused a significant increase in the number of children and young people being electively home educated. Whilst the number had now almost dropped to pre-pandemic levels - around 500, there was a high number of children within this cohort who were more difficult to manage in schools, and who had Education, Health and Care Plans. During the pandemic, the Children and Families Service had increased its capacity to work with those families educating their children at home, with an increase from two to six officers. The officers would undertake more visits to check on the home circumstances and ensure that the curriculum was being followed, and would challenge parents in those cases where the curriculum was not being followed. The officers would also assist in terms of reintegrating the children back into school.
- The Government's plan to have a National Register for children receiving home education would only benefit the Council if such plans provided the Council with more powers. The only control the Council currently had was to ensure the curriculum was being followed, as well as the power to take action if there were any safeguarding concerns. The Council did have a Red Amber Green (RAG)-rating system for children being home educated, to ensure they were safe. Therefore, without any additional powers, it was not considered that such a Register would be very helpful, other than providing a figure for the number of children being home educated in the country at any one time.
- Statistics in terms of the number of primary and secondary schools in the city which had been graded outstanding by Ofsted since 2012 would be circulated to Members.
- The Council commissioned Learn Sheffield as its school improvement partner, and who undertook assessments of all schools in terms of their progress, and provided each school with a RAG-rating based on such assessments. It was not clear whether such information was publicly available.
- In terms of elective home education, and based on a social care perspective, it was not believed that there was an expectation on parents to teach the full range of the national curriculum, apart from English and Maths. Further advice would be sought on this issue and circulated to Members.
- In terms of neglect, there was a considerable amount of work ongoing with schools, nurseries, GPs and health visitors, both through the SCSP and as a local authority, in terms of helping them to notice, at an early stage, that families were struggling, and required additional support. A considerable amount of the Children and Families Service's budget was earmarked for early intervention services, and help and support was targeted to such families in an attempt to stop problems escalating. In cases where safeguarding issues were identified, social workers would be allocated and, in extreme circumstances, children would be removed from their parents. The Council had robust assurance mechanisms in place to try and ensure that services provided were

effective in terms of keeping children safe and supported. South Yorkshire Police had arranged force-wide training on identifying signs of neglect and on the effects of trauma on children, and understanding the signs of neglect and being able to evidence it. The police had emergency powers which could be used in the most extreme cases.

- As part of the SCSP, there was an exploitation tracker, which enabled partners, when information became available about children and young people being at risk of exploitation, to meet and discuss the circumstances, and identify any risks. A plan would then be put in place in terms of how the case would be managed.
- County Lines had been identified as a serious issue, and the Police Neighbourhood Teams were liaising with schools in terms of educating on the signs of exploitation in this regard. Some excellent work on tackling the issue had been undertaken in the Sharrow and Nether Edge areas which, it was hoped, could be rolled out to other areas of the city. It was not possible to identify whether children from specific areas or backgrounds were involved in such activity. Children and young people from any area or background, especially those who had possibly suffered from a lack of parental support or neglect, or were missing certain things in their lives, could be drawn into such activity.
- The time limits for the Child Death Overview Panel to review cases of deaths in children were variable due to the different circumstances regarding each case. In many cases, there would be delays due to the time taken for all the necessary evidence and information to be collated to enable the review to take place. The delays were mainly due to the collation of information regarding medical issues, and were generally not the cause of the local authority. Whilst officers were working with colleagues across South Yorkshire to obtain information regarding trends in this regard, details on the comparisons regarding the numbers and circumstances of the deaths, with other core cities, were not available, but could be circulated to Members.
- The Children and Families Service was currently £23m overspent, although there was an expectation that this would be brought back into line during the 2022/23 financial year. This would be a hugely challenging process. There was a budget strategy, which focused predominantly on investing to save. There were two main areas of expenditure within the Service - staffing and placements for looked after children, with the latter experiencing a serious overspend. The Service was seeking capital investment to provide more in-house placements, which would hopefully help to reduce spend on the placement budget. In addition, through continued investment in early help, the Service was also trying to achieve a reduction in demand for places. The Service was also reviewing its current business support arrangements, in terms of looking to make savings through the increased use of technology.
- It had been highlighted, as part of a serious case reviews where bereavement had contributed in some way to circumstances in families, and which had led to

tragic events. The Council was commissioning services for children, mainly therapeutic, but it was accepted that more systemic work was needed, which could be picked up through the SCSP.

- A residential placement for a looked after child would cost around £3,000 a week, with an external residential placement ranging between £5,000 and £12,000 a week. An Independent Foster Placement arrangement would cost around £950 per week, with a Council placement costing around £350 per week.
- There would be an element of freedom in terms of how the Annual Reports could be drafted going forward, and in the light of this, as well as the imminent arrival of the new Independent Chair, there could be an opportunity to review this, and provide more information in the Report in terms of the successful operation of the Partnership. The partners had regular conversations about what they consider to be concerns, and how such concerns could be addressed. There were a number of things the Scrutiny Committee could look at in order to get assurances that the SCSP was operating successfully, such as whether partners were actively engaged, and reviewing the Annual Delivery Plan, reviewing the dashboard containing data on what was working well or not, and reviewing the multi-agency audit activity.

6.6 RESOLVED: That the Committee:-

- (a) notes the Sheffield Children Safeguarding Partnership - Annual Report 2020-21, together with the comments now made and the responses to the questions raised: and
- (b) expresses its thanks and appreciation to (i) all SCSP partners and local authority staff, for the excellent work undertaken during 2020-21 to safeguard children and young people in the city and (ii) David Ashcroft, the outgoing Independent Chair of the SCSP, for the excellent work undertaken by him in his role during the last three years.

7. SHEFFIELD SEXUAL EXPLOITATION SERVICE (AMBER PROJECT) - ANNUAL REPORT 2020-21

7.1 The Committee received the Sheffield Sexual Exploitation Service (Amber Project) - Annual Report 2020-21.

7.2 In attendance for this item were Dan White (Head of Health and Targeted Services), Tina Gilbert (Sheffield Children Safeguarding Board Manager), Donna Taylor (Assistant Director, Safeguarding and Quality Assurance), Shelley Hemsley (District Commander, South Yorkshire Police) and Carly Speechley (Director of Children and Families Service).

7.3 Dan White introduced the report, which provided an overview of the work of the Sheffield Child Sexual Exploitation Service during 2020-21 and setting out the

service user profile and key achievements during the year, together with priorities for 2021-22. The report also made reference to the formal launch of the Amber Project in January 2020, which involved the integration of the Sexual Exploitation Service with the Council's Criminal Exploitation Team.

7.4 Members of the Committee raised questions, and the following responses were provided:-

- The lifting of the Covid-19 restrictions had resulted in an increase in the number of referrals to the Service, hence the higher numbers of referrals in Quarter 4. It was likely that there would be a similar number of referrals in early 2021-22, and the Service was currently looking at whether there had been any blockages in terms of referrals, or whether there had been a reduction in the number of referrals from particular agencies, with such details to be included in the Annual Report 2021-22.
- Whilst the vast majority of referrals were females, there had been a very small number of males referred to the Service.
- It was not unusual for there to be a higher number of referrals regarding young people aged between 14 and 16, which it was believed was due to them reaching the age of promiscuity and having more access to social media.
- Whilst the information was not available at the meeting, it was expected that details of the reduction in the number of referrals, as compared with other core cities, would be included in the Annual Report 2021-22.
- As a result of the reduction in the number of referrals, staff had more time to dedicate to those children and young people being referred. Staff also had more time to focus on the development of training which, in turn, would help them in terms of dealing more effectively with the children and young people referred to the Service.
- Whilst the Service would have data on the status of the children and young people referred, such as whether they were out of education, either having been excluded or were in exclusion centres, or being home-educated, this was not included in the report, and could be circulated to Members.
- Staff in the Service had visited colleagues in grassroots organisations to provide training in order to make them more aware of the referral processes into the Safeguarding Hub.
- The Service was currently based at Star House, Division Street, and comprised a nurse, police officers, youth workers and other professionals.

7.5 RESOLVED: That the Committee:-

- (a) notes the Sheffield Sexual Exploitation Service (Amber Project) - Annual Report 2020-21, the information now reported and the responses to the

questions raised; and

- (b) expresses its thanks and appreciation to all staff in the Service for the excellent work undertaken by them during 2020-21.

**8. IMPACT OF THE COVID-19 PANDEMIC ON YOUNG PEOPLE -
RECOMMENDATIONS TO THE CO-OPERATIVE EXECUTIVE TOWARDS
RECOVERY FROM THE IMPACT OF THE PANDEMIC ON YOUNG PEOPLE IN
SHEFFIELD**

8.1 The Committee received a report of the Policy and Improvement Officer (Alice Nicholson) setting out four key recommendations of the Sheffield Youth Cabinet regarding the continuing impact of the Covid-19 pandemic on young people in the city, to be submitted to the Council's Co-operative Executive for consideration.

8.2 Further to an issue raised by Alice Riddell regarding the possible inclusion of views of young carers in the recommendations on the basis that this was raised as an issue when representatives of the Youth Cabinet attended the Scrutiny meeting, Alice Nicholson stated that she would talk to the Youth Cabinet to see if the recommendations could be reworded to include this aspect.

8.3 RESOLVED: That the Committee:-

- (a) notes the contents of the report now submitted, together with the comments now made; and
- (b) approves the recommendations set out in the report, subject to any further amendment to the wording regarding the issue now raised.

9. DRAFT WORK PROGRAMME 2021-22

9.1 RESOLVED: That the Committee approved its draft Work Programme for 2021-22 now submitted.

10. DATE OF NEXT MEETING

10.1 It was noted that the next meeting of the Committee would be held on Wednesday, 9th March 2022, at 1.00 pm, in the Town Hall.

This page is intentionally left blank



Report to Children, Young People & Family Support Scrutiny & Policy Development Committee

Wednesday 9th March 2022

Report of: Carly Speechley, Director Children and Families

Subject: Early Help Review

Author of Report: Louise Bower

Louise.bower@sheffield.gov.uk

The Committee have previously received an update on Multi-Agency Support Teams (MAST) and expressed an interest in the Early Help Review.

This report provides an introduction and an update on the Early Help Review for Children, Young People and Family Support Scrutiny Committee.

Type of item: The report author should tick the appropriate box

Reviewing of existing policy	
Informing the development of new policy	X
Performance / budget monitoring report	
Cabinet request for scrutiny	
Full Council request for scrutiny	
Call-in of Cabinet decision	
Other	

The Scrutiny Committee is being asked to:

- **Note the update, and consider if there are any future matters for the Committee work programme**

Background Papers:

Category of Report: OPEN

Summary of the key messages:

The aim of the Early Help Review is to articulate an ambition for locality based early intervention services to children and families across Sheffield. This review officially commenced on 27th February 2020. Progress was initially impacted by Covid-19. The Steering Group with senior managers across the people portfolio met to recommence the review on the 9th June 2020 and work has continued since then.

Sheffield City Council are committed to providing early help to children, young people and families. Significant investment and support has resulted in multi-agency working to identify children and families who may need early help and a wide early help offer being available.

However;

- Despite our investment in Early Help, increasing poverty and emergent risk have resulted in increasing demand and complexity
- We need a more consistent and fair approach across the city for all children, young people and their families
- Sometimes families are not able to access early help or have to wait too long
- Our 'reach' is not wide enough for all the children, young people and families that need help and support so demand for acute and reactive services continues to increase
- Partners tell us it can be difficult to navigate our early help system, they aren't always clear how to access services and sometimes there is duplication which is inefficient and means families have to tell their story more than once
- Our families have increasingly complex needs which cannot be addressed through a single agency or single issue response
- Our workforce tells us the current offer is difficult to navigate, there are multiple processes to identify need and numerous pathways depending on need identified.
- There is a disproportionate resource allocated to identification and assessment which means there are not enough 'case holding' workers to undertake the keyworker role for families.
- Improving our Early Help offer to meet the additional needs of more families will reduce demand for acute services which is both better for children and more cost-effective provision.

The Early Help review aims to:

- Develop **one** integrated and coordinated offer of early help services delivered in localities which is strengths based and whole family
- Streamline pathways into the offer based on data and referral information
- Increase case holding capacity whilst maintaining specialist function
- Co locate services with partner agencies where possible

The Steering group agreed a two phased approach to the review;

- Phase One will articulate a coherent Sheffield City Council Early Help Offer and is anticipated to conclude in early 2022
- Phase Two will articulate a coordinated partnership Early Help Offer for the City and will commence in early 2022.

Background Information

What do we mean by Early Help?

Early Help refers to the wide range of support available to children, young people and families from universal provision through to targeted non-statutory intensive support (including our “Edge of Care” services), to prevent additional needs arising or escalating. All services who work with children, young people and parents should work to the guidelines in Working Together 2018 that describes the reach of Early Help as follows;

Providing early help is more effective in promoting the welfare of children than reacting later. Early help means providing support as soon as a problem emerges, at any point in a child’s life, from the foundation years through to the teenage years.

Early help can also prevent further problems arising; for example, if it is provided as part of a support plan where a child has returned home to their family from care, or in families where there are emerging parental mental health issues or drug and alcohol misuse.

Effective early help relies upon local organisations and agencies working together to:

- *identify children and families who would benefit from early help*
- *undertake an assessment of the need for early help*
- *provide targeted early help services to address the assessed needs of a child and their family which focuses on activity to improve the outcomes for the child*

[Working Together to Safeguard Children 2018 \(publishing.service.gov.uk\)](https://www.publishing.service.gov.uk/government/uploads/system/uploads/attachment_data/file/682047/Working-Together-to-Safeguard-Children-2018.pdf)

Why does Early Intervention matter? This 2 minute video illustrates why beautifully...

<https://www.youtube.com/watch?v=liPtHMa7WCY>

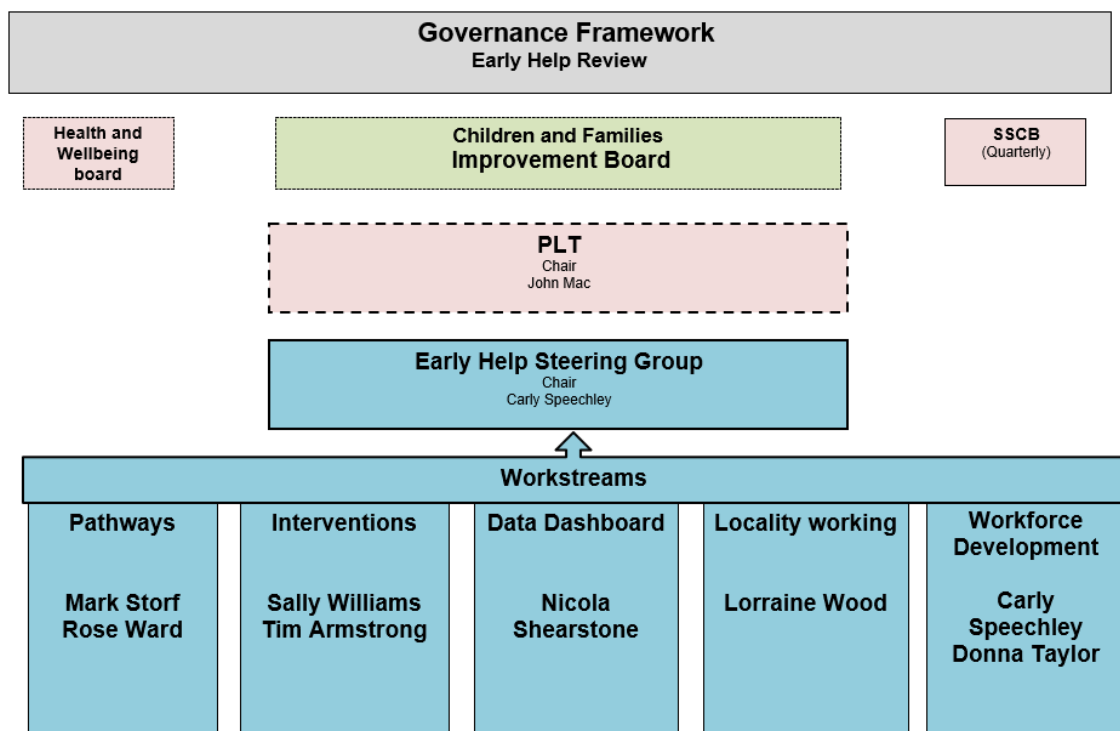
Vision for the Early Help Review

Sheffield will be an inclusive city where we work together to ensure that all children receive the right support at the right time so that they live a happy and fulfilled life

Ambition

To have a clear pathway into one integrated early help offer that has been co-produced with all stakeholders including; children, young people, families, staff, practitioners, and partners

Governance for Phase One



The steering group agreed the co-produced vision articulated in the inclusion strategy encompasses our vision for early help across the City.

Phase 1 of the review is being progressed by the following workstreams;

Interventions Workstream

What success would look like;

A clear and comprehensive Early Help interventions model/framework comprising evidence-informed practice that clarifies what interventions are on offer and what outcomes each intervention should deliver against so that we can understand what works, where the gaps are and make decisions about what we offer each family based on their needs.

Progress and next steps

- Development of the Early Help Outcomes Framework, with input from partners, schools, parents, children and the Early Help workforce.
- A draft of the Early Help Interventions Menu is being tested on with a focus group of partner agencies this week for their input with the aim of creating one clear offer easily navigable by referrers who have identified additional needs of children, young people and/or families.

Data Workstream

What success would look like;

- Comprehensive information sharing agreements that enable all Early Help and relevant health services to share information
- Reduced number of IT systems for Early Help services and better use of data to assist frontline work, to measure impact, to assess our performance and to target our resources.
- Data sets that inform us of the differing demands in different localities across the city

Progress and next steps

- Many Early Help services now using the same IT system and so more easily able to see and share information
- Progress with developing improved data sharing agreements with partner agencies to enable frontline practitioners to have all the relevant information they need to improve the support that they offer to children, young people and families.
- Further IT developments planned subject to financial constraints

Pathways Workstream

What success would look like;

- Streamlined pathways into the offer based on data and referral information
- Our Services will work together well and have simple processes that support a 'Tell Us Once' approach that enables more families being offered timely support that meets their needs

Progress and next steps

Work underway to create a single point of access into children, young people & families services with a single referral form – initial testing with a small range of services due to begin in November 2021 with expansion and development over the coming months.

Workforce Workstream

What success would look like;

- An Early Help workforce all trained to a clear knowledge and skills framework that are skilled and supported to do high quality work with children and families
- All Early Help workforce to have up to date, relevant job descriptions, permanent team structures and clarity re: role and remit and how their work benefits children and families
- Clear career development pathways for the Early Help workforce, with more opportunity for side-ways moves as well as attainable progression opportunities
- Increased case holding capacity overall whilst retaining advisory and specialist expertise in our workforce, and Early Help workers work with the whole family where possible.

Progress and next steps

- A workforce redesign process is underway to align job roles with the outcomes framework for Early Help and the newly created Early Help Knowledge & Skills Framework. Anticipated implementation date for practitioner roles is January 2022.
- An enhanced learning & development offer has been developed to ensure that the Early Help workforce are skilled and supported to do the work that is needed.

Localities Workstream

What success would look like;

- Families can access early help services in their neighbourhood, and the provision available is the right type and amount to meet the needs of that community (informed by good quality data)
- Early Help practitioners work together well to provide multi-agency joined up services that meet families need in that community
- The Voluntary and Community sector, Police, Community workers, neighbourhood officers, health workers, schools and Early Help workers together deliver support to children and families as needed.

Progress and next steps

- Connecting Practice Events have been held regularly in each locality to bring together the SCC, partner agency and VCF sector Early Help practitioners that serve that community, to build relationships and promote the provision available for families.
- Phase 2 of the Early Help Review will further progress the Early Help offer across this wide range of agencies for the families of Sheffield.

Sheffield Early Help Outcomes Framework

- ✓ **SAFE & NURTURED** – Children & young people are safe, secure & nurtured within their home
- ✓ **SAFE COMMUNITIES** – Children and young people are safe and supported in their community so that they are not at risk of harm
- ✓ **GOOD HEALTH** - Children and young people have good physical health
- ✓ **EMOTIONALLY HEALTHY** – Children and young people are resilient and emotionally healthy
- ✓ **ENGAGING EDUCATION & ACTIVITIES** – Children and young people access their education, employment, and their local community

And in all of our work we ensure that children and young people with additional needs get identified and receive appropriate support in a timely manner.

This page is intentionally left blank



Report to Children, Young People and Family Support Scrutiny & Policy Development Committee Wednesday 9th March 2022

Report of: Policy and Improvement Officer

Subject: Children, Young People & Family Support Scrutiny & Policy Development Committee Closing Report March 2022

Author of Report: Alice Nicholson, Policy and Improvement Officer
alice.nicholson@sheffield.gov.uk

Sheffield City Council is moving to a new Committee Decision Making System, designed to be in place May 2022. This Closing Report highlights the work of this Committee in the two years since its last Annual Report (March 2020) and identifies issues the Committee would urge the Executive and a new Committee to maintain consideration of.

Type of item: The report author should tick the appropriate box

Reviewing of existing policy	
Informing the development of new policy	
Statutory consultation	
Performance / budget monitoring report	
Cabinet request for scrutiny	
Full Council request for scrutiny	
Call-in of Cabinet decision	
Briefing paper for the Scrutiny Committee	
Other	X

The Scrutiny Committee is being asked to:

- Note the activity of the Committee over last two years
- Review, agree the issues it would urge Executive and appropriate Committee to consider

Background Papers: [Sheffield Council Constitution](#)

Category of Report: OPEN

Closing Report 2022: Children, Young People and Family Support Scrutiny Committee

1.0 Activity of the Committee 2019-2022

1.1 This is a list of the matters considered by Children, Young People and Family Support Scrutiny and Policy Development Committee in municipal years 2019/20 and 2021/22, some items were considered in both years as part of the Committee's holding to account role:

1.2

Call-in of the Cabinet Decision on Investing in Young People
Request by the Scrutiny Committee for Further Information Following the Call-in of the Cabinet Decision on Investing in Young People
Return to School in Covid-19 - Update on Schools Fully Opening
Adoption Service - Annual Reports (in 2020/21 & 2021/22)
Fostering Service - Annual Reports (in 2020/21 & 2021/22)
Sheffield Safeguarding Children Board - Annual Reports (in 2020/21 & 2021/22)
Sheffield Sexual Exploitation Service - Annual Reports (in 2020/21 & 2021/22)
Sheffield Youth Cabinet - Impact of the Covid-19 Pandemic on Young People in Sheffield
Youth Service - Sheffield City Council Update
Multi-Agency Support Teams (MAST)
Elective Home Education
Sheffield Youth Cabinet - Impact of the Covid-19 Pandemic on Young People in Sheffield: Review and Follow-Up to Youth Cabinet a

2.0 Children, Young People and Family Support Scrutiny and Policy Development Committee Legacy

2.1 There are matters this Committee have considered regularly in their holding to account / service review role:

- Fostering and Adoption Annual Reports
- Sheffield Children Safeguarding Partnership Annual Report
- Sheffield Child Exploitation Service annual reporting
- Elective Home Education

2.2 In 2019/20 CYP&FS Scrutiny and Policy Development Committee set up a task group to look at Voice and Influence of Children and Young People, this work resulted in ongoing involvement for the Committee with Youth Cabinet members, collaborating on recommendations to the Executive on key issues.

This last two years the focus has been a check on the impact of the pandemic on young people, with recommendations to the Executive.

2.3 The CYP&FS Scrutiny and Policy Development Committee has in line with other Scrutiny Committees always included on its agenda an item for public questions and petitions, this has facilitated the voice of residents to be heard particularly the Parent Carer Forum, and adopter parents.

2.4 The Committee would encourage where appropriate for this legacy not to be lost.

3.0 Out of Time 2021/2022

3.1 These are issues outstanding from 2021/22 with long running involvement and influence from Children, Young People and Family Support Scrutiny and Policy Development Committee. They are out of time as the reporting or development programme of the matter is beyond this Municipal Year and the last meeting of this Scrutiny Committee:

- OFSTED and CQC reinspection of Special Educational Needs and Disability Services (SEND), the reinspection was very recent, and the report will not be available in time for this Committee.
- Youth Services / Youth Strategy – the programme for this extends beyond scheduled meetings of this Committee.

4.0 Recommendations

The Committee is asked to:

- Note the activity of the Committee over last two years
- Review, agree the issues it would urge Executive and appropriate Committee to consider

This page is intentionally left blank